

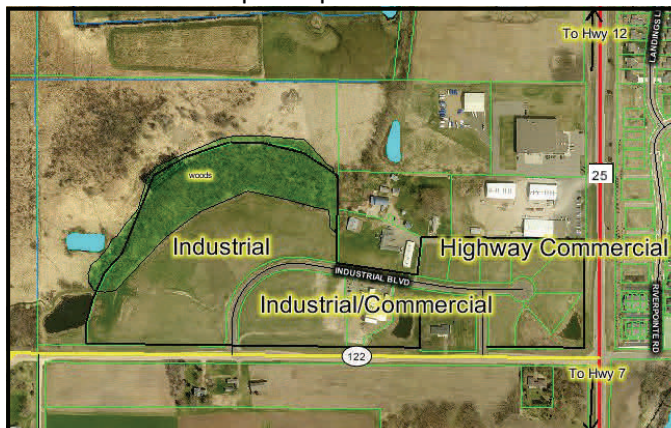
Development Opportunities

In 2008, the City of Watertown welcomed a new Light Industrial/Business Park to the community. The Business Park is conveniently located at the intersection of State Trunk Highway 25 and County Road 122. Easily accessed from east-west Highways 7 and 12, this is the perfect location to grow your business.

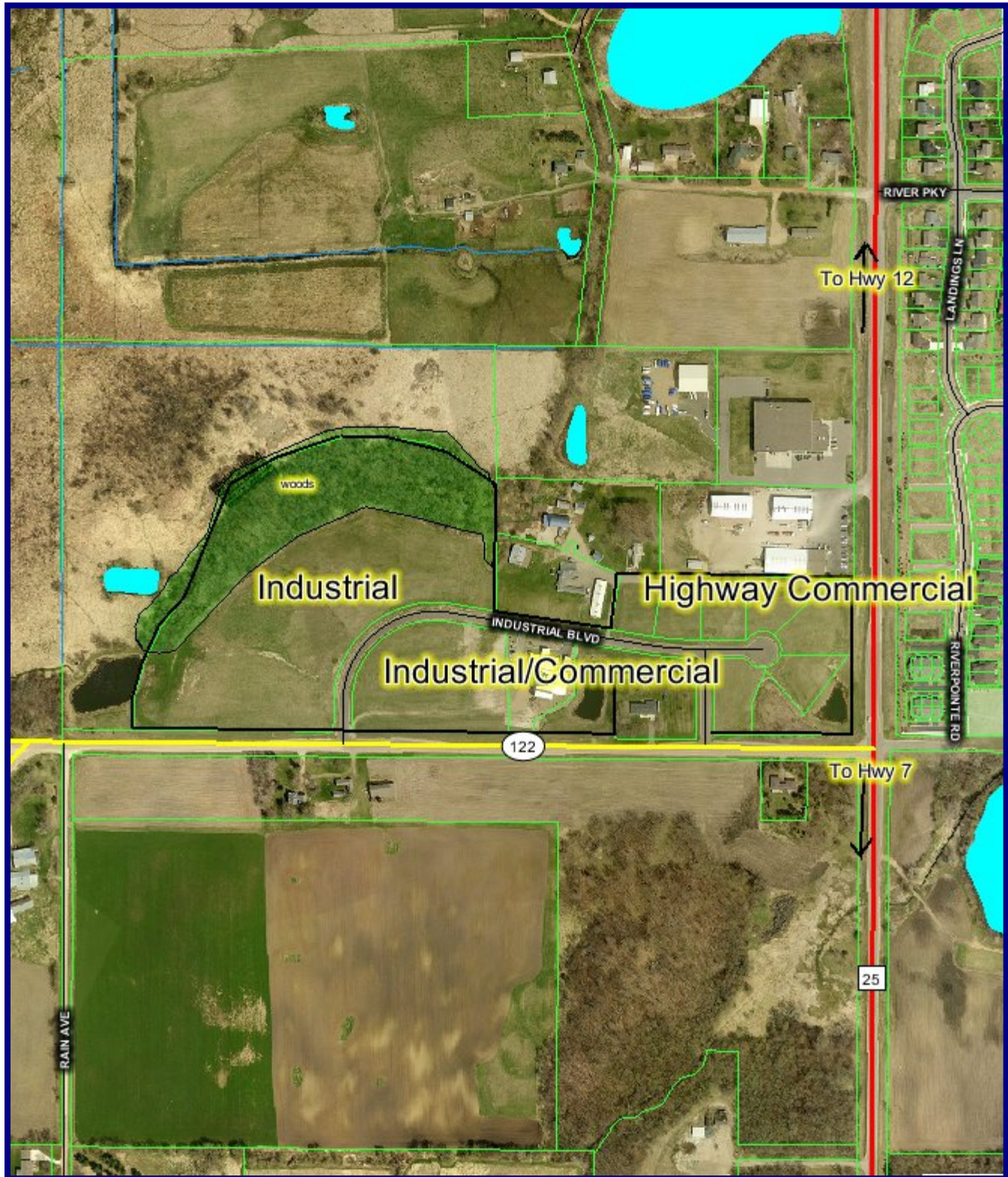


Seeking high quality businesses:

- | | |
|--------------------------|---|
| Design Standards | The Watertown Business Park has design standards to ensure a high quality building stock. This enhances building values and increases return on investment when expanding in Watertown. |
| Available Workforce | The City of Watertown is located in Carver County which provides a high quality diverse workforce — prime for business development. Area residents' education levels range from skilled technical workers to college graduates. |
| Collaborative Market | Watertown has a collaborative business market. The City's Economic Development Authority and County Development Authority have a prosperous track record of working with new businesses to create jobs. Both the City and County invested in the Douglas Kugler Eco Site (located in the Industrial Park) and are open to creative partnerships for future development. |
| Connected | The City of Watertown is two stop signs and one stop light from Downtown Minneapolis — just 30 minutes from I-394 and I-494. |
| Technologically Advanced | The Watertown Business Park has the ability to be served by a Fiber Optic Network. This advanced technology provides opportunities for global connectivity at the fastest speeds possible. |



Industrial Park, Watertown



Disclaimer: This map was created using Carver County's Geographic Information Systems (GIS), it is a compilation of information and data from various City, County, State, and Federal offices. This map is not a surveyed or legally recorded map and is intended to be used as a reference. Carver County is not responsible for any inaccuracies contained herein.

Map Scale
1 inch = 472 feet

Map Date
4/27/2012

