

FOR LEASE

Office-Warehouse/Manufacturing Space Waconia, Minnesota



CONTACTS:

Fred Hedberg, CCIM, SIOR
(952) 854-8382
fhedberg@paramountre.com

Jeffrey Swanson, CCIM
(952) 854-7485
jswanson@paramountre.com

WEBSITE:

www.paramountre.com

ADDRESS:

3601 Minnesota Drive
Suite 925
Bloomington, MN 55435
(952) 854-8290

FAX:

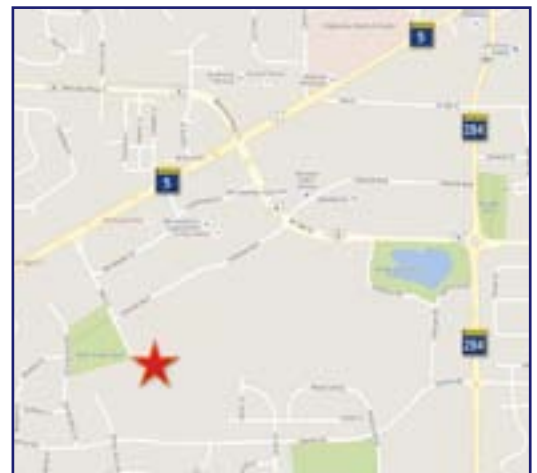
(952) 854-8295

1400 MILL LANE BUILDING

1400 Mill Lane
Waconia, Minnesota

PROPERTY SPECIFICS:

- ▶ 98,688 SF one story precast office-warehouse/manufacturing building
 - 17,280 SF office
 - 81,408 SF warehouse/manufacturing
- ▶ 16.62 acres of which 10.55 acres or 459,432 SF is buildable
- ▶ 205 parking stalls with additional land for expansion
- ▶ Four (4) dock high doors-two (2) are interior docks; Three (3) drive-in doors
- ▶ 18' clear height in whse./mfg.; 9' ceiling height in office
- ▶ Rooftop HVAC units plus one (1) air make-up system
- ▶ 100% wet sprinkler system
- ▶ Power: 2000 Amps, 480 Volts
- ▶ Fiber provided by Century Link
- ▶ 18 cranes located throughout the manufacturing area



FOR LEASE



1400 MILL LANE BUILDING

1400 Mill Lane | Waconia, MN

PARAMOUNT
REAL ESTATE CORPORATION

TCN
WORLDWIDE
REAL ESTATE SERVICES

3601 Minnesota Drive
Suite 925
Bloomington, MN 55435
952-854-8290 • FAX 952-854-8295
www.paramountre.com

CONTACT:

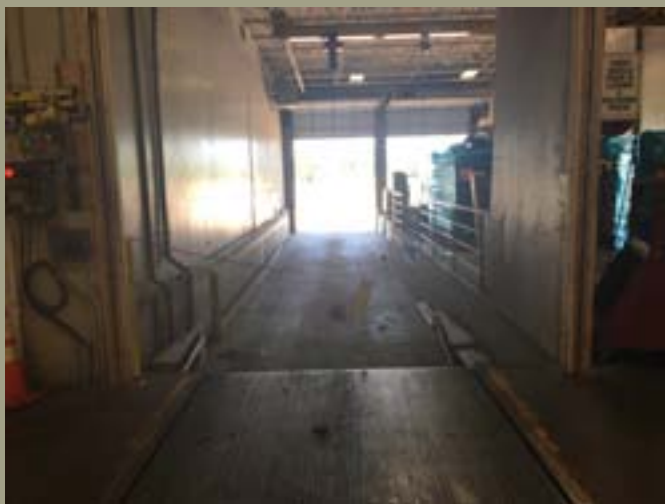
Fred N. Hedberg, CCIM, SIOR
(952) 854-8382
fhedberg@paramountre.com

Jeffrey Swanson, CCIM
(952) 854-7485
jswanson@paramountre.com

TRUSTED. DEDICATED. EXPERIENCED.

FOR LEASE

Office-Warehouse/Manufacturing Space Waconia, Minnesota



CONTACTS:

Fred Hedberg, CCIM, SIOR | (952) 854-8382 | fhedberg@paramountre.com

Jeffrey Swanson, CCIM | (952) 854-7485 | jswanson@paramountre.com



FOR LEASE

1400 MILL LANE BUILDING

1400 Mill Lane | Waconia, MN

TOTAL BUILDING SIZE:	98,688 square feet precast concrete office-warehouse/manufacturing building
AVAILABLE SQUARE FEET:	17,280 square feet office <u>81,408 square feet manufacturing/warehouse</u> 98,688 square feet total
NET RENTAL RATES:	8.75 per square feet office 4.75 per square feet manufacturing
EXPANSION/ DIVIDE:	Building can be expanded by approximately 40,000 SF and is divisible to 10,000 SF
PID:	75516010
YEAR BUILT:	1996
CEILING HEIGHT:	18' clear in warehouse; 9' ceiling height in office
COLUMN SPACING:	40' X 40'
LOADING:	4 dock doors (two are interior docks) 3 drive-in doors
PARKING:	205 car parking stalls with additional land for expansion
FLOOR:	6" slab on grade – manufacturing area 4" slab on grade – office area
SPRINKLER:	100% wet building sprinkler system
HVAC:	Rooftop HVAC units as well as one (1) air make-up system – Fully air conditioned
POWER:	2000 Amps, 480 Volts
TAX & CAM COST:	\$2.75 per square feet
COMMENTS:	18 cranes are located throughout the manufacturing area; most are two ton undersling cranes.

For further information contact:
PARAMOUNT REAL ESTATE CORP | TCN WORLDWIDE
Fred Hedberg, CCIM, SIOR / Jeffrey Swanson, CCIM
(952) 854-8382 / (952) 854-7485
E-mail: fhedberg@paramountre.com / jswanson@paramountre.com

◆ 3601 Minnesota Drive, Suite 925, Bloomington, MN 55435 ◆

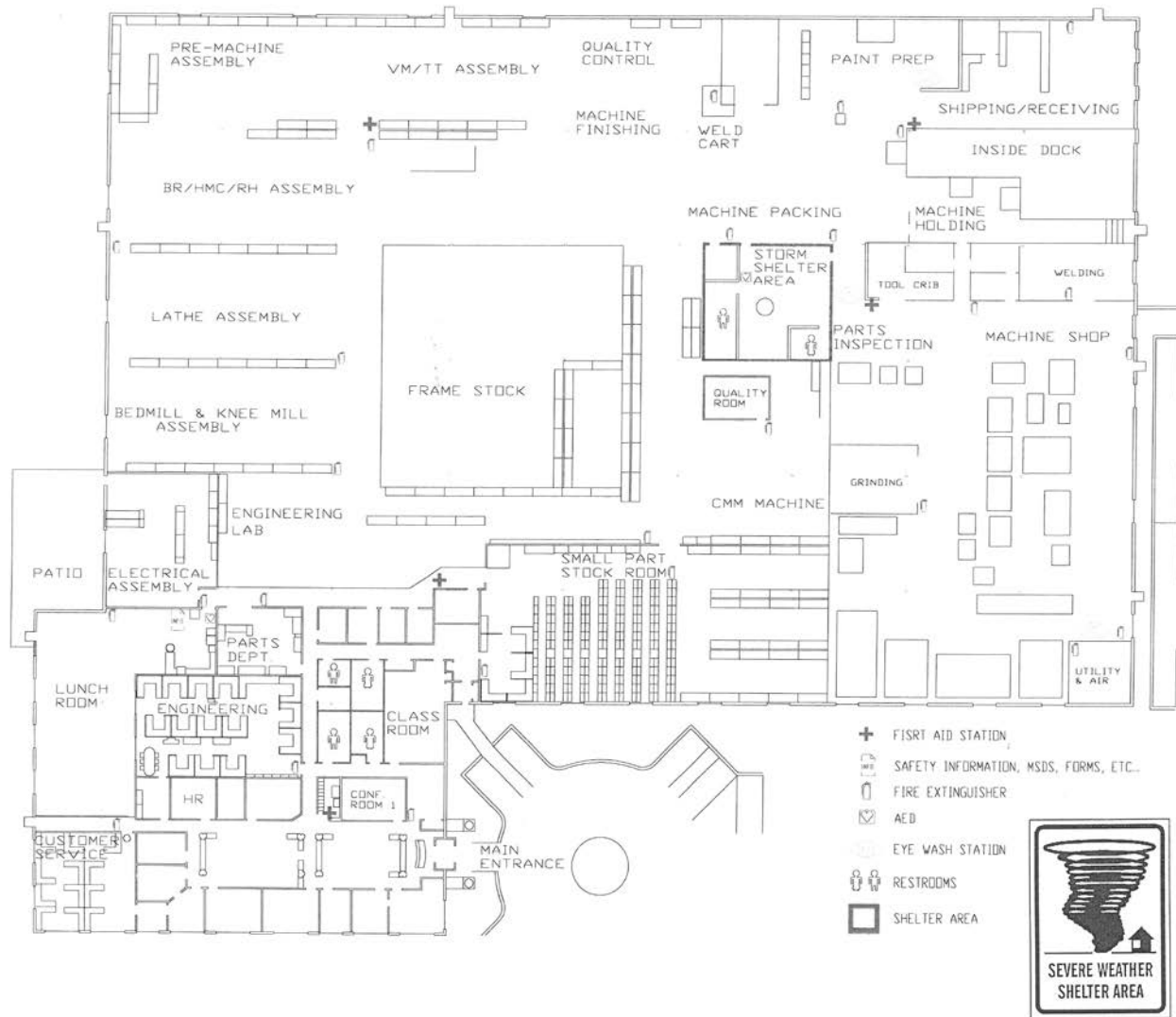
Information is deemed reliable; however, no warranty or representation is made as to its accuracy or completeness.
Property is subject to price change, prior sale or lease, and withdrawal from the market, all without notice.

FOR LEASE

1400 MILL LANE BUILDING

1400 Mill Lane | Waconia, MN

FLOOR PLAN



AVAILABLE SQ. FT.: 98,688

For more information, please contact:

Fred Hedberg, CCIM, SIOR, (952) 854-8382, fredhedberg@paramountre.com
 Jeffrey Swanson, CCIM, (952) 854-7485, jswanson@paramountre.com

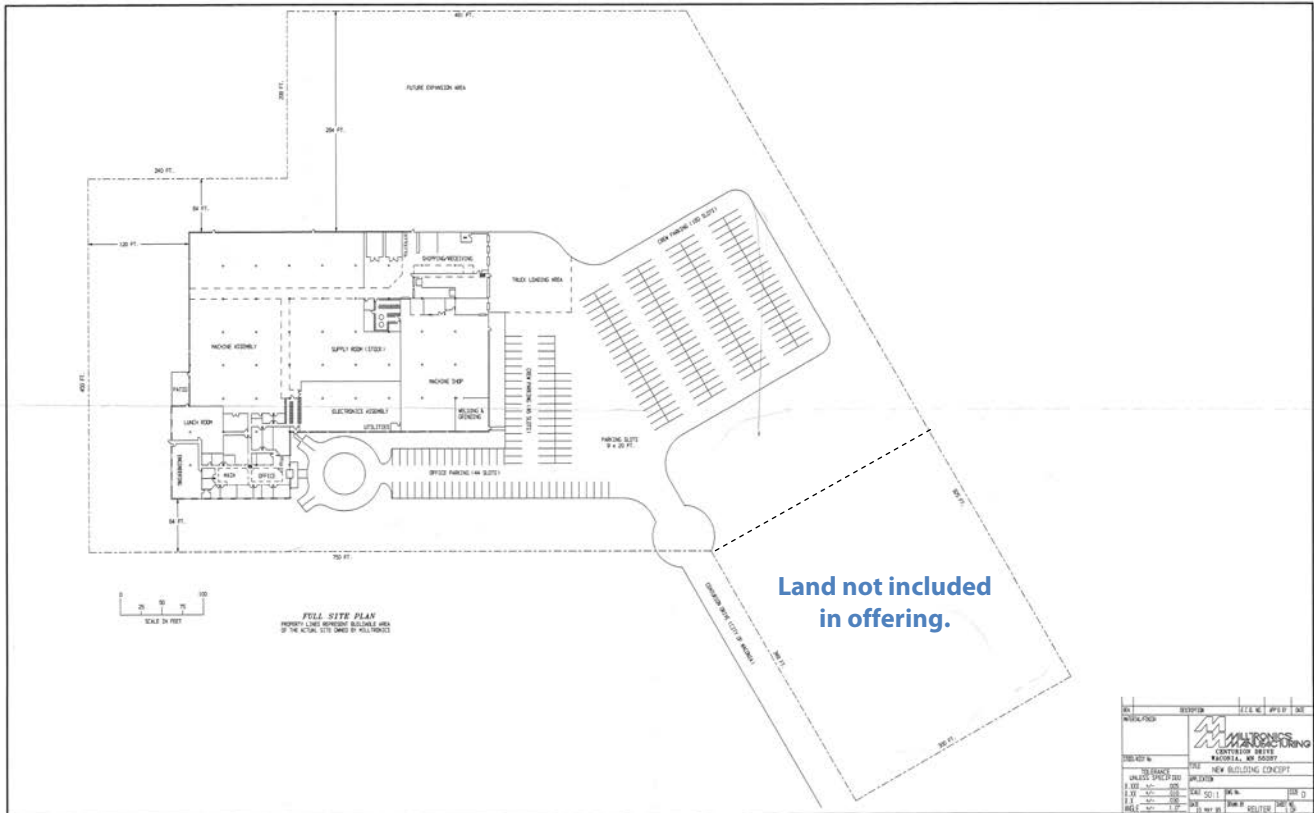


FOR LEASE

1400 MILL LANE BUILDING

1400 Mill Lane | Waconia, MN

FULL SITE PLAN



AVAILABLE SQ. FT.: 98,688

For more information, please contact:

Fred Hedberg, CCIM, SIOR, (952) 854-8382, fredhedberg@paramountre.com

Jeffrey Swanson, CCIM, (952) 854-7485, jswanson@paramountre.com

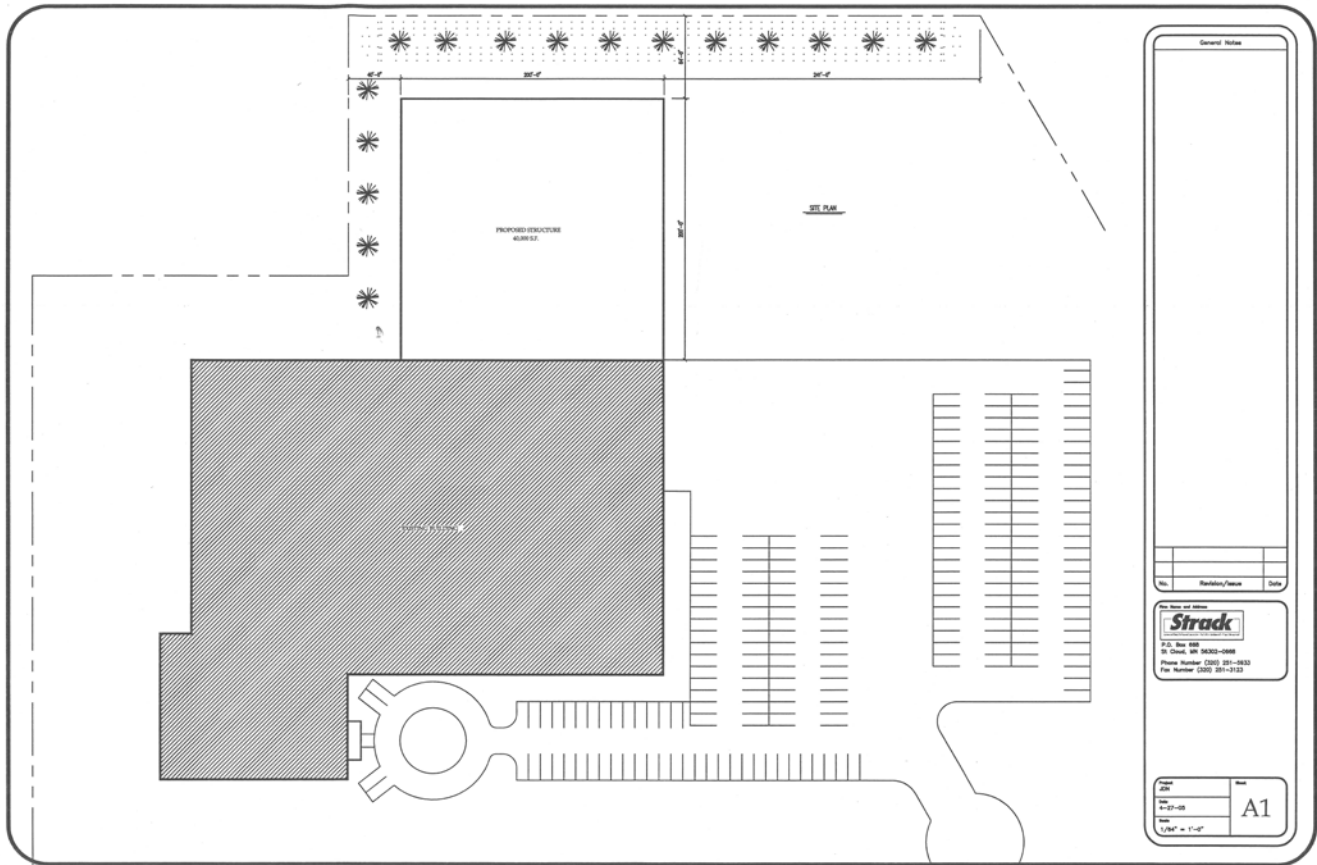


FOR LEASE

1400 MILL LANE BUILDING

1400 Mill Lane | Waconia, MN

FULL SITE PLAN WITH PROPOSED EXPANSION



AVAILABLE SQ. FT.: 98,688

For more information, please contact:

Fred Hedberg, CCIM, SIOR, (952) 854-8382, fredhedberg@paramountre.com

Jeffrey Swanson, CCIM, (952) 854-7485, jswanson@paramountre.com

